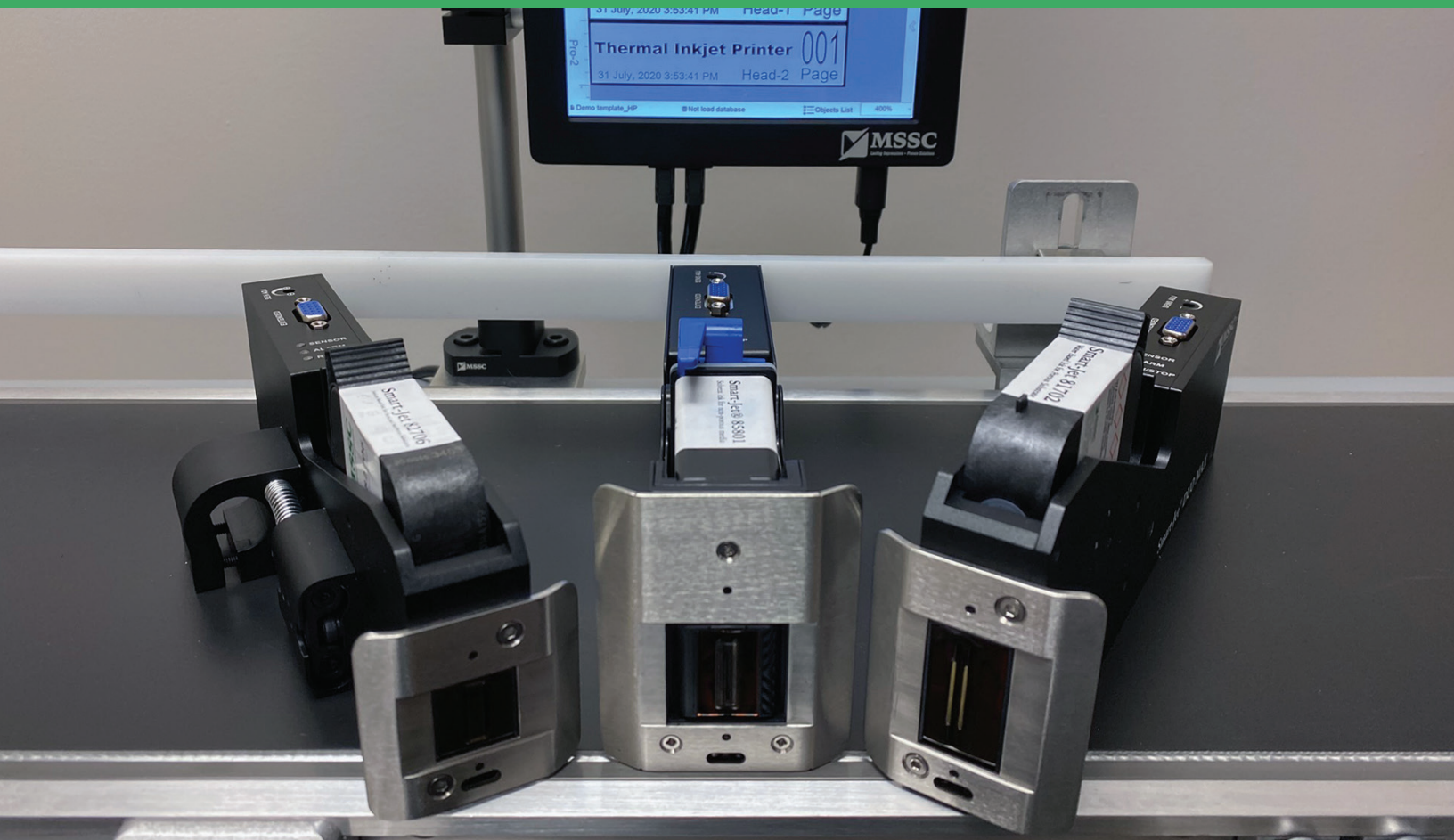


# SMART-JET® DUO CONTROLLER

## ONE CONTROLLER. DOUBLE THE BENEFITS.

***Introducing the Smart-Jet® DUO. Now you can set up and program up to 2 printheads using one touchscreen controller.***

The Smart-Jet DUO Controller cuts downtime by allowing you to control up to two printheads at one time. This controller gives you the flexibility to operate three different types of printheads, including the ½" Smart-Jet DUO PRO, 1" Smart-Jet DUO MAX, and ½" Smart-Jet DUO REACH with MEK and 0.4" (10mm) throw distance. To further improve flexibility in your print application, the Smart-Jet DUO allows for either uniform or independent speed and sensor configurations. In addition, you can connect a keyboard and mouse for programming and designing your message, allowing for quicker content creation and accuracy compared to a touchscreen alone. That makes the Smart-Jet DUO Controller your choice for inkjet coding and marking.



Contact your distributor to order or to see the full line of superior quality MSSC products.



Phone: (618) 343.1006 Fax: (618) 343.1016  
926 McDonough Lake Road, Collinsville, Illinois 62234 USA  
[www.msscllc.com](http://www.msscllc.com)

# SMART-JET® DUO CONTROLLER

## THERMAL INKJET CODER

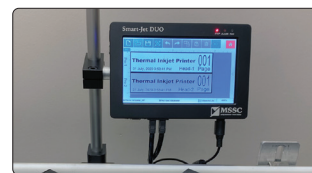
### Features:

- Text, Counter, Box/Lot, Datetime, Expiry Date, Julian Date, Shiftcode, Image, Database (TXT, CSV, SQL, MySQL, SQLite, JSON)
- Barcodes (Code 11, Code 39, Code 128, EAN, QR, Datamatrix, GS1 Datamatrix)
- POD (Print online data)
- Free design
- Integrate with other devices (PLC, Camera, Checkweigher) via RJ45
- Real-time Printing
- WYSIWYG (What You See Is What You Get)
- Data upload, Backup & Recovery via USB
- Built-in internal sensor
- Maximum length of template up to 78.74" (2m)
- English (default), German, Vietnamese, Chinese, Korean, and Russian
- Store up to 8GB template on the printer's memory
- Windows true fonts
- Automatic recognition of ink type
- Solvent ink for porous and non-porous material
- Aqueous ink for printing on porous and semi-porous material



### Specifications:

- **Dimensions:** (L x W x H): Controller 7.6" x 5.1" x 1.4" (193mm x 130.3mm x 34.5mm)
- **Weight:** Controller 2 lbs. (888 grams)
- **Display:** 7-inch touch screen
- **Power Supply:** AC 100-240 V, 50/60 Hz, DC 24V 2.5A, Maximum power consumption: 60W
- **Resolutions:** Max 600 x 600 dpi
- **Print speed:** Max 249 ft. (76m)/min @ 300 x 300 dpi
- **Density:** Up to 3 levels of optical density
- **Throw Distance:** 0.08"-0.4" (2-10mm) based on printhead type
- **Operating Temperature Range:** Between 41°-122°F (5-50°C)



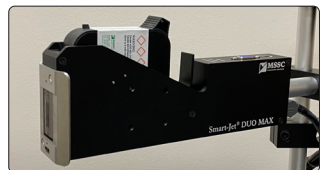
Smart-Jet® DUO Controller



Smart-Jet® DUO PRO Printhead



Smart-Jet® DUO REACH



Smart-Jet® DUO MAX